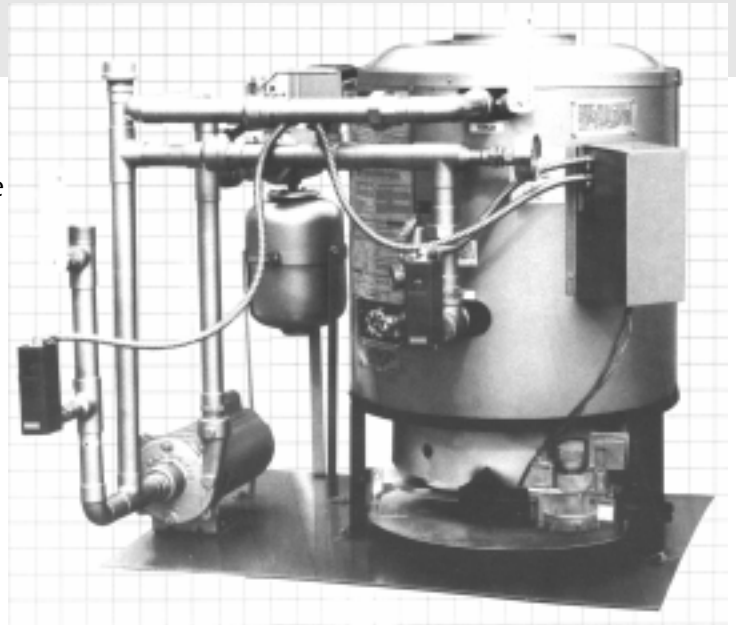


# MAINTAIN YEAR-ROUND SAVINGS WITH A WEBEN-JARCO FLOOR HEAT SYSTEM.

Icy bays, terminals, and warehouses can cause problems during winter months. Keep your warehouse warm, and your bays and terminals ice-free with an economical Weben-Jarco Floor Heat System. Our systems include: boiler, circulating pump, safely flow switch, pop-off valve, pressure temperature gauge, operating temperature aquastat, high-limit aquastat diaphragm type expansion tank, automatic water pressurization valve, and an air eliminator valve—all preplumbed and prewired on a single base. An electrical control panel and an outside thermostat are included as part of the system.



## SIZING INFORMATION

Annual Minimum Temperature Geographic Zones



\*We do not recommend floor heat in Zone 1 for economic reasons.

NO. OF BAYS	SYSTEM FOR ZONES 2-3	SYSTEM FOR ZONES 3-4
2	AJHFH18	AJHFH18
3	AJHFH35	AJHFH35
4	AJHFH35	AJHFH50
5	AJHFH50	AJHFH50
6	AJHFH50	AJHFH70
7	AJHFH70	AJHFH70
8	AJHFH70	AJHFH97
9	AJHFH97	AJHFH97
10	AJHFH97	AJHFH97

## SPECIFICATIONS

MODEL	BTU INPUT/HR.	WIDTH	DEPTH	DRAFT HOOD DIAMETER	INLET GAS SIZE	CIRCULATING-PUMP SIZE	APPROX. SHIPPING WT
AJHFH18	185,000	54"	30"	6"	3/4"	1/3 H P	425 LBS
AJHFH35	350,000	54"	30 1/2"	9"	3/4"	1 H P	475 LBS
AJHFH50	500,000	59"	35"	10"	1"	1 H P	550 LBS
AJHFH70	700,000	61"	39"	12"	1 1/4"	1 H P	675 LBS
AJHFH97	975,000	64"	44"	14"	1 1/4"	2 H P	750 LBS
AJHFH120	1,200,000	66"	46"	16"	1 1/2"	2 H.P.	800 LBS.
AJHFH140	1,400,000	66"	46"	18"	1 1/2"	2 H.P.	850 LBS.